

Facts

2010
IMPACT FACTOR:
0.842

Impact Factor: **0.842**
Five-Year Impact Factor: **1.034**
Published by: Taylor & Francis Group
Volume number: 50 (2011)
Frequency: 4 issues per year
Print ISSN: 0017-3134
Online ISSN: 1651-2049

EXPLORE
A CHOICE OF
FREE ACCESS
ARTICLES!

Online

Grana publication details, including instructions for authors and subscription information:
www.tandf.co.uk/journals/sgra

Submit online via ScholarOne Manuscripts:
<http://mc.manuscriptcentral.com/sgra>

eJournal online contents (inclusive *iFirst*):
www.informaworld.com/smp/title



Editorial Board

Editor-in-Chief
Else Marie Friis, Sweden

Editors
Richard Bradshaw, UK
David Cantrill, Australia
Carol Furness, UK
Mervi Hjelmsroos, USA

Technical Editor
Christian Pott, Sweden

Editorial Board
Frøydis Eide, Norway
Karen Dybkjær, Denmark
Sofie Lindström, Denmark
Heikki Seppä, Finland
David Batten, UK
Gretchen Jones, USA
Madeleine Harley, UK
Michael Hesse, Austria
Kaj Raunsgaard Pedersen, Denmark
Raymond van der Ham, The Netherlands

Collegium Palynologicum Scandinavicum (CPS)

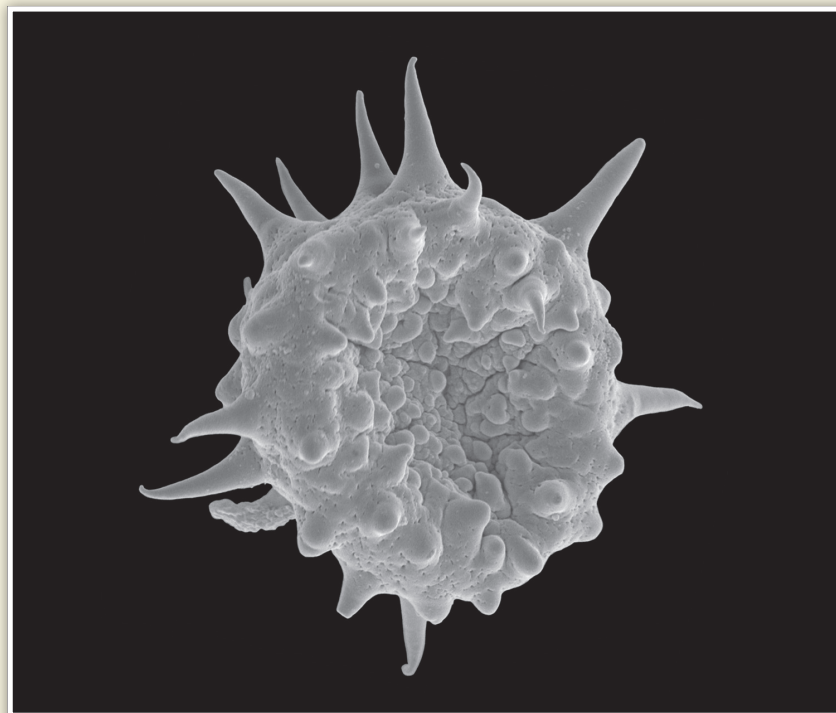
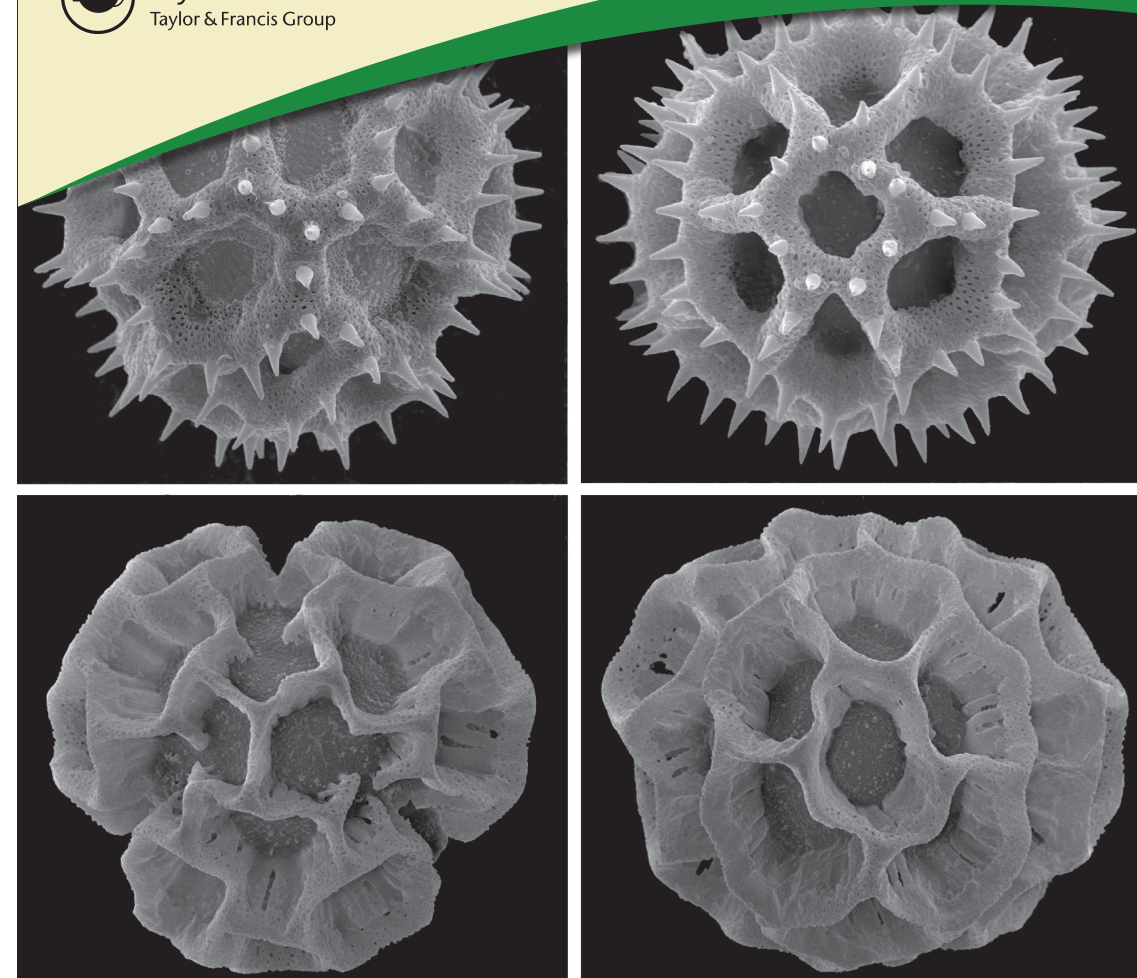
A society of palynologists in the Scandinavian countries; President Frøydis Eide, Norway
www.palynology.info

Contact

Grana Editorial Office Stockholm
Swedish Museum of Natural History
Palaeobotany Department
Box 50007
SE-104 05 Stockholm
Sweden

Else Marie Friis: else.marie.friis@nrm.se
Christian Pott: christian.pott@nrm.se

 Taylor & Francis
Taylor & Francis Group



Spore of fossil *Selaginella* sp. (Selaginellaceae).
Photo: Friðgeir Grímsson.

Photos on title page: Maria Angulo/Massimiliano Demattèis

GRANA

An international journal of
PALYNOLOGY and AEROBIOLOGY





GRANA

Grana is an international journal of palynology and aerobiology. *Grana*, originally published as *Grana Palynologica*, was founded in 1954 by Professor Gunnar Erdtman. It is published under the auspices of the *Collegium Palynologicum Scandinavicum (CPS)* in affiliation with the *International Association for Aerobiology (IAA)*.

Scope

Grana publishes original research papers in palynology and aerobiology.

Palynology includes studies on morphology and ultrastructure of pollen grains and spores of Eucaryota and their importance for plant taxonomy, phylogeny, ecology, phytogeography, palaeobotany, etc.; studies on dispersed grains investigate their systematic and stratigraphic significance.

Aerobiology involves studies of airborne biological particles, such as pollen, spores, etc., and their launching, dispersal, and final deposition. The significance of these particles in medicine (allergology) and plant pathology is of particular interest.

Publisher

Grana is published by Taylor & Francis. All relevant information about the journal can be found under www.tandf.co.uk/journals/sgra

ORDER YOUR
FREE SAMPLE
COPY NOW!



Pollen of *Bolbostemma paniculatum* (Fevilleoideae; Cucurbitaceae) with irregularly striate ornamentation without microstriate pattern.

Photo: Raymond van der Ham.

Quality and aims

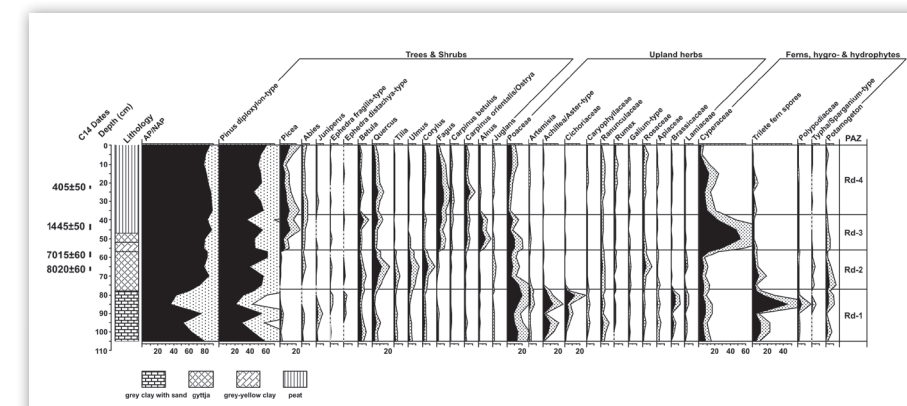
Many of the topics published in *Grana* are dependent on high quality illustrations. Likewise, many palynological studies require extensive documentation in form of text, tables, and taxa lists. *Grana*, therefore, has no space limit other than its set issue format and enforces thorough image documentation as a stronghold of the journal, now and in the future.

Grana will strive to provide the palynological community with high quality research articles that are relevant to the research community. We aim to provide the research community with information about new developments, advances in our understanding, and exciting new directions for palynological research.

Palynology today

Palynological research interacts with a wide diversity of scientific disciplines, providing data that can be used to interpret basic biological processes through to environmental changes over much larger timescales. As a result, *Grana* caters for a diverse audience, publishing across the breadth of palynological research, including melissopalynology, quaternary palynology and vegetation history, pollen morphology, pollen development, palaeopalynology, and aerobiology.

Grana also publishes palaeobotanical/palaeopalynological studies: primarily studies that analyse systematics and phylogeny of extinct reproductive structures with in situ spores and pollen.



Pollen diagram from the peat bog Beliya Kanton, Western Rhodopes Mountains, Bulgaria. Analysis: Maria Lazarova/Spassimir Tonkov.

European Pollen Database (EPDB)

Since 2007, *Grana* has collaborated with the European Pollen Database (EPDB) by publishing short contributions in a standardised format at irregular intervals as documentation for pollen data delivered to the database.